



Announcement

FIGURE SKATING COMPETITION FOR
RECREATIONAL, YOUNG ADULT AND ADULT SKATERS

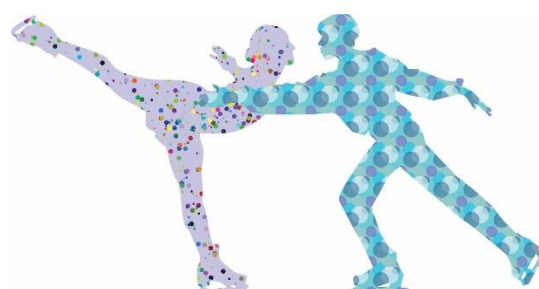
4th SWAN CHALLENGE

Bled, **Sloven**ia

Event time:	October 31– November 3, 2019
Organized by:	Skating club Labod Bled (Slovenia)
Venue of competition:	Športna dvorana Bled (Ice Rink Bled)
Address:	Ljubljanska cesta 5, Bled, Slovenia http://www.ledena-dvorana.si/Predstavitev/Opis-dvorane

Event includes:

Swan challenge 2019 competition
Seminar on ice
Ballet for figure skaters
Practice times
Optional sightseeing trips
Meet and greet party
Disco on Ice
Gala on ice



Swan challenge 2019 competition

SWAN CHALLENGE 2019 competition will include the following disciplines and age groups:

a.) disciplines:

- Single Ladies and Men
 - Free Skating (Pre-Bronze, Bronze, Silver, Gold, Masters/Elite)
 - Artistic Free Skating (Pre-Bronze, Bronze, Silver, Gold, Masters/Elite)
- Pair Skating
 - Free Skating (Adult, Intermediate, Masters/Elite)
 - Artistic Free Skating (Adult, Intermediate, Masters/Elite)
- Solo Dance
 - Pattern Dance (Pre-Bronze, Bronze, Silver, Gold)
 - Free Dance (Pre-Bronze, Bronze, Silver, Gold)
- Ice Dance
 - Pattern Dance (Pre-Bronze, Bronze, Silver, Gold, Masters/Elite)
 - Free Dance (Pre-Bronze, Bronze, Silver, Gold, Masters/Elite)
 - Rhythm Dance (Adult, Masters/Elite)

b.) age categories:

b1 for ladies and men Single Skating and Solo Dance:

-Recreational skaters born **after July 1st, 2001**; Pre-Bronze, Bronze, Silver, Gold (skaters who didn't compete at the national or/and international competitions and does not have any records to compete at any national or/and international competitions).

-Young adults skaters born **between July 1st, 1991 and June 30th, 2001**; Pre-Bronze, Bronze, Silver, Gold, Masters/Elite.

-Adults:

- **Class I** skaters born between **July 1st, 1981 and June 30th, 1991**
- **Class II** skaters born between **July 1st, 1971 and June 30th, 1981**
- **Class III** skaters born between **July 1st, 1961 and June 30th, 1971**
- **Class IV** skaters born between **July 1st, 1951 and June 30th, 1961**
- **Class V** skaters born **on or before June 30th, 1951**

b2 for pair skating and ice dance:

For **Pairs Free Skating and Ice Dance** events both partners must have reached the age of 18 by July 1st , preceding the event. Neither partner must reach 79 before July 1, preceding the event.

-Young Adult: 18 years – 28 years

-Adult: 28 years – 79 years

The competition will be run with [Swan challenge 2019 technical requirements](#)

The Organizers have the right to combine categories. The judging shall be done in the new system (according to ISU regulations - IJS).

REGISTRATION:

Entries must be registered via online [registration form](#) no later than **20th of September 2019** and sent by e-mail on the following address: swanchallenge2019@gmail.com

A Entry fee for competition:

First Single event	60 € per person
Second Single event	35 € per person
First Solo dance event	60 € per person
Second Solo dance event	35 € per person
First Pair event	70 € per pair
Second Pair event	40 € per pair
First Ice Dance event	70 € per pair
Second Ice Dance event	40 € per pair
Third Ice Dance event	30 € per pair

Late entries received after **20th of September 2019** will be charged extra 20 € per person and 30 € per pair. Payment must be made via bank transfer or Paypal after receiving registration confirmation, no later than 20th of October 2019. All the bank transfer chargers and Paypal money transfers fee are on the side of the competitor.

In case of withdrawals, the entry fee will be refunded only with official medical excuse.

Payments must be made to

LABOD BLED
Ljubljanska 5, 4260 Bled, Slovenia

Bank account:
IBAN SI56 0313 9100 0428 350
SWIFT: SKBASIX
Bank: SKB d.d.
Bank Address: Ajdovscina 4, 1000 Ljubljana, SI

B Accreditation:

All event officials, competitors and coaches should register at OC Office upon arrival.

C Planned Program Content sheet:

Program Content Sheets must be sent no later than October 20 by e-mail to swanchallenge2019@gmail.com or uploaded to site together with the registration form. They will not be accepted during the competition.

D Music:

Music (equipped with the full name of the competitor, club and category) on CD or USB must be delivered to the Office no later than 3 hours before the official start of the event and picked up from the same place after the event. We encourage you to send the music in advance to e-mail

address: swanchallenge2019@gmail.com or hand it over to the organisers as early as possible, during practice times before the competition at the Ice Rink Bled.

E Practice:

Official practices will take place at the Bled Ice Rink and will be available from Wednesday, October 30 on. Practice fee is 10 € per person (15 € per pair) per practice (45 min) and should be announced with entry and paid in advance via bank transfer/PayPal or on the spot in cash. There is no guarantee to join the practice without the registration.

If you arrive earlier than October 30, practice is possible with local skating club or on public ice hours. Please contact the organisers for details: swanchallenge2019@gmail.com.

F Expenses:

The organizer does not pay any expenses of the competitors or team leaders. Travel expenses and accommodation should be covered by the participants individually.

The organizer will cover the accommodation and travel costs for invited officials. Interested officials, please contact the organisers as soon as possible.

G Protocol:

Protocol shall be available at the Labod Bled Skating Club www.labod-bled.si. The Organizers shall not provide print-outs or CD-s.

H Liability:

In accordance with ISU Rule 119, the Organizer accepts no liability for injury or for property loss or damage incurred by Competitors or Officials. Each participant is expected to provide its own insurance protection.

I Transfer from/to Ljubljana airport:

Price: 45 EUR for a private car (up to 3 persons)
 15 EUR per person for more than 3 people on the same flight (van/mini bus)

Other transfers can be arranged according to the agreement. Please send us your requests.

J Accomodation

Recommended hotels with special price for SWAN CHALLENGE participants and guests are:

	single room BB	double room BB
Hotel Park****	92 EUR BB	104 EUR BB
Hotel Rikli Balance****+	115 EUR BB	130 EUR BB

Obligatory supplements:

Tourist tax Adults	3,13 EUR per person per day
Tourist tax Children 7-18 years	1,57 EUR per person per day
Administration fee	1,00 EUR per person per stay

Both hotels are within 5 minutes walk from the ice rink and Bled lake shore, triple rooms are available on request. Both hotels offer free parking and Wi-Fi, free entrance to the Pool and reduced rates for Wellness facilities. Online booking is available on links bellow. Limited number of rooms available, we recommend early bookings – by September 30, 2019 all of still available rooms at the time will be released. Reservation/Event code is 23081

PARK HOTEL:

<https://reservations.travelclick.com/77251?groupID=2471923&adults=1>

B&B p.p. per night in double room	52,00 €
Child up to 6 years in the room with 2 adults – 100%	0,00 €
Child up to 6 years in the room with 1 adult (based on the room price for 1 pax) – 100%	0,00 €
Child from 6 to 12 years in the room with 2 adults – 50%	26,00 €
Child from 6 to 12 years in the room with 1 adult (based on the room price for 1 pax) – 15%	44,20 €
Third person in double room or Suite on extra bed – 30%	34,40 €
Single use supplement	40,00 €
Dinner supplement	20,00 €

RIKLI BALANCE HOTEL:

<https://reservations.travelclick.com/77257?groupID=2471913&adults=1>

B&B p.p. per night in double room	65,00 €
Child up to 6 years in the room with 2 adults – 100%	0,00 €
Child up to 6 years in the room with 1 adult (based on the room price for 1 pax) – 100%	0,00 €
Child from 6 to 12 years in the room with 2 adults – 50%	32,50 €
Child from 6 to 12 years in the room with 1 adult (based on the room price for 1 pax) – 15%	55,25 €
Third person in double room or Suite on extra bed – 30%	45,50 €
Single use supplement	50,00 €
Dinner supplement	23,00 €

We also have a [list of apartments](#) (walking distance to the Ice hall), different sizes, different prices – please send us an e-mail if you would like to receive special apartment offer.

Bled has many restaurants very close to the Ice Hall, we suggest to leave the lunch/dinner options open to individual choices (expected cost 10-20 EUR per meal).

Seminars on ice and off ice

On Ice: Skating seminar with David & Patricia Arnold

How to improve your speed and flow over the ice
Correct take off and landing positions
How to raise your levels in spins and step sequences

PRICE: 25 EUR for 1 hour =60 min, 50 EUR for 2 hours; 70 EUR for 3 hours; max 25 participants, ice patch included

Off Ice: John and Živa Bonač; Ballet for Figure Skaters

Posture, Balance and Coordination for Figure Skaters and Ice Dancers.
With a combination of Classical Ballet Barre, Yoga, Floor Barre, Pilates and Acrobatics we will discover and improve the secrets of the movement.

PRICE: 8 EUR per single visit 1 hour=60 min, 15 EUR (2 hours) or 20 EUR package price for 3 ballet sessions

Other activities

Meet and greet:

The dinner party for participants and their guests will be held on Friday evening, November 1, starting at around 19:30h. Free for all competitors, for extra guests is 10 EUR.



Disco on Ice:

Join us for Disco party on Ice on Saturday, November 2 from 21:30 to 23:00. Public entrance fee (5 EUR).

Gala Performance:

On the last day of competition (Sunday, November 3 at 17:00 in the afternoon) winners, Master categories and other attractive performances skate once again to the open public.

Sightseeing of Bled, Bohinj, Ljubljana and further:

A trip to Bled island with traditional Pletna boats and sightseeing of Bled Castle will be organised. We are encouraging you to take a trip to Bohinj lake on Thursday October 31 and join Ljubljana ice patch + sightseeing on Friday November 1. We will also offer a trip to Postojna caves for those who can stay on Monday, November 4.

Please contact the organisers if you wish to receive additional tips. Slovenia is full of surprises and has many options for half day or day trips, we are happy to suggest activities that would suit your travel and skate schedule.

Event schedule (provisional-updated May 23, 2019):

	morning	Afternoon	Evening
Wednesday, October 30	Practice	Practice Skating seminar with David & Patricia Arnold	
Thursday, October 31	Sightseeing Bohinj Practice Ballet for skaters with Živa and John	Sightseeing Bled Practice Skating seminar with David & Patricia Arnold Ballet for skaters with Živa and John	
Friday, November 1	Practice Sightseeing and practice in Ljubljana Sightseeing Bled Skating seminar with David & Patricia Arnold Ballet for skaters with Živa and John	Short Practice SOLO DANCE- PATTERN DANCE ICE DANCE- PATTERN DANCE SINGLE MEN – FREE SKATING	Meet & Greet Party at Špica Restaurant at 19:30
Saturday, November 2	Short Practice SOLO DANCE - FREE DANCE ICE DANCE – RHYTHM DANCE PAIR - FREE SKATING Ballet for skaters with Živa and John SINGLE LADIES - FREE SKATING <i>Pre-Bronze, Bronze, Silver, Gold, Masters/Masters Elite</i>		Disco on Ice 21:30-23:00
Sunday, November 3	Short Practice ICE DANCE – FREE DANCE PAIR – ARTISTIC FREE SKATING SINGLE – ARTISTIC FREE SKATING		Swan Challenge Gala on Ice at 17:00

A detailed time schedule will be available 10 days before the competition at the organiser's website www.labod-bled.si

Final timetable and starting order shall be announced one day before the competition.

Additional Information and Contact Persons:

Alma Telalovic	+386 41 895 468	swanchallenge2019@gmail.com
Tadeja Omovsek	+386 31 501 909	www.labod-bled.si